

# Coppermills

2 bedroom Flat - Conversion

**Sylvan Road, London, E17**

£400,000 Leasehold - Share of Freehold

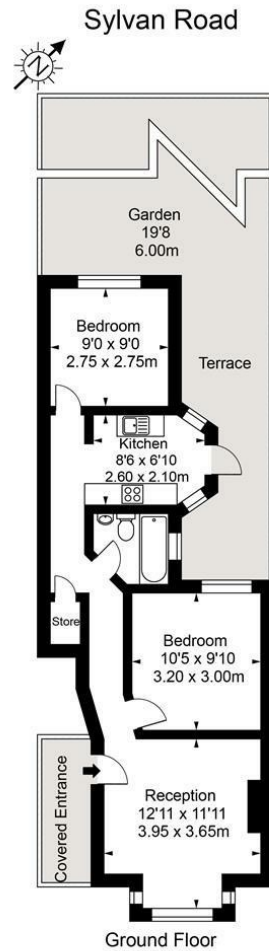


To view this property  
[info@coppermills.co.uk](mailto:info@coppermills.co.uk)  
020 8509 9170

A great home that's  
selling chain free!

Sylvan Road, London, E17

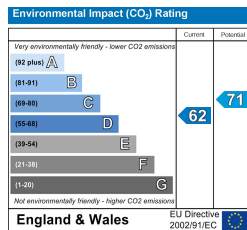
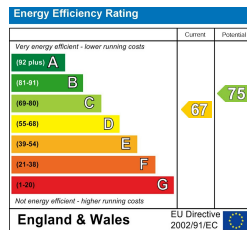





Ground Floor  
 Approx Gross Internal Area 522 Sq Ft - 48.45 Sq M

FOR ILLUSTRATIVE PURPOSES ONLY. NOT TO SCALE.  
 Whilst every attempt has been made to ensure the accuracy of the floorplan shown, all measurements, positioning, fixtures, fittings and any other data shown are an approximate interpretation for illustrative purposes only and are not to scale. No responsibility is taken for any error, omission, misstatement or use of data shown. Floor plan by www.bestangle.co.uk

### EPC Details





Experience, honesty and trust is a good place to start, but with **Coppermills** there is so much more.

Commitment, advice and support from our team will ensure you achieve your property goals.

If you are looking for sales, lettings or management of your property, you will benefit from our extensive knowledge of the local market.



**Coppermills**

info@coppermills.co.uk  
T: 020 8509 9170  
M: 077 8217 0925  
www.coppermills.co.uk  
63 St James Street  
London E17 7PJ

You may download, store and use the material for your own personal use and research. You may not republish, retransmit, redistribute or otherwise make the material available to any party or make the same available on any website, online service or bulletin board of your own or of any other party or make the same available in hard copy or in any other media without the owner's express prior written consent. The owner's copyright must remain on all reproductions of material taken.